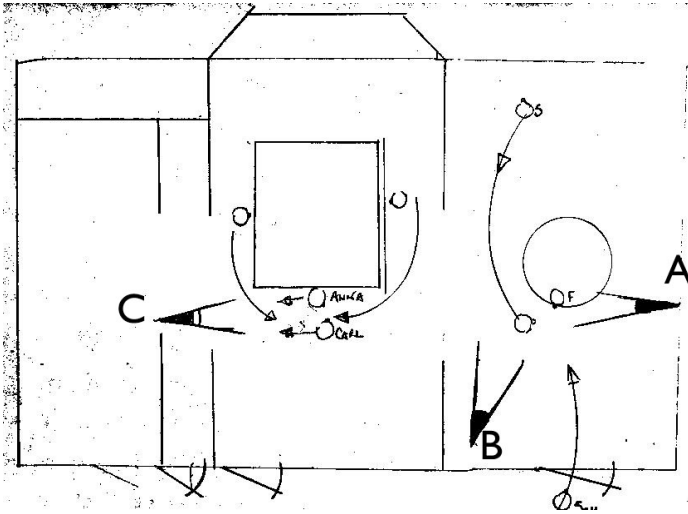


SCENE 8.2 - BLOCKING

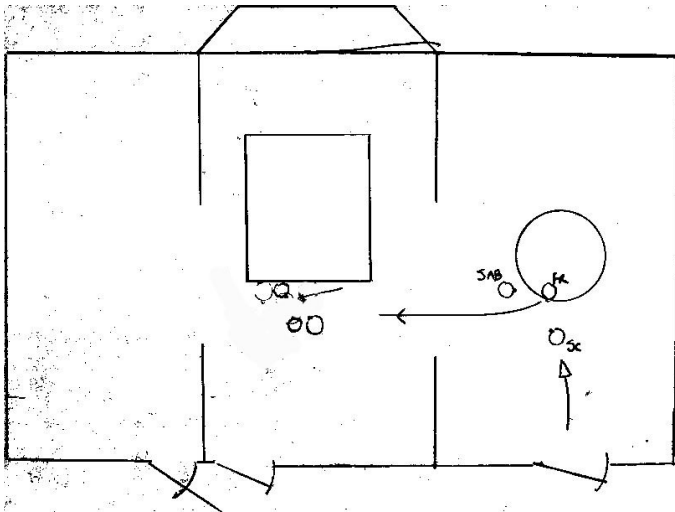


SABINE is at
mantelpiece mirror
FRIDOLINE sits on
round seat

SABINE moves to
FRIDOLINE
FRIDOLINE stands to
talk to mother

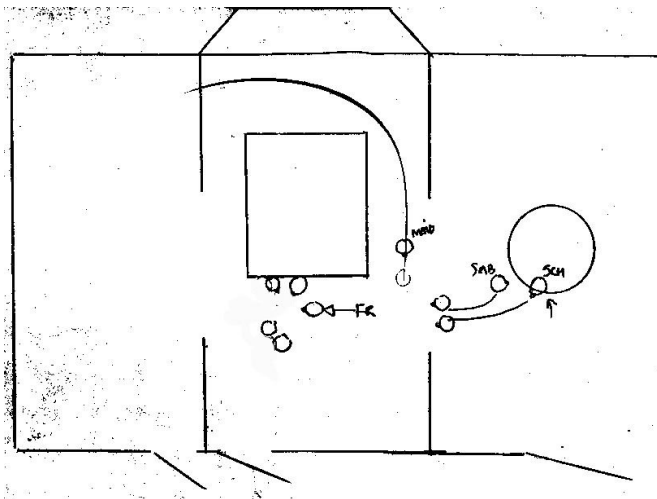
SCHREBER enters

(Parallel action -
ANNA discusses x-
ray card)

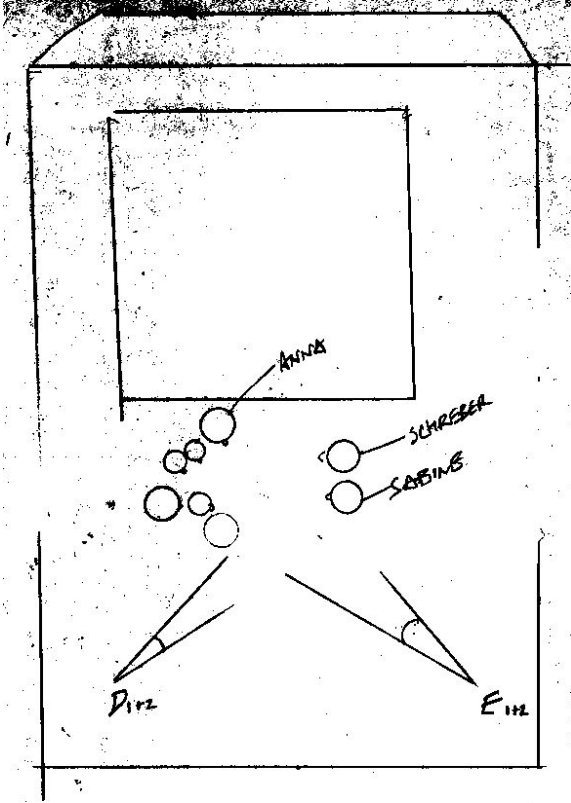


SABINE sends
FRIDOLINE to Dining
Room to join ANNA

SCHREBER and
SABINE talk.
(Schreiber sits into
Fridoline's place?)



MAID enters between
SABINE and ANNA
with drinks tray.
Sabine nods her to
serve.
SCHREBER and
SABINE join family.

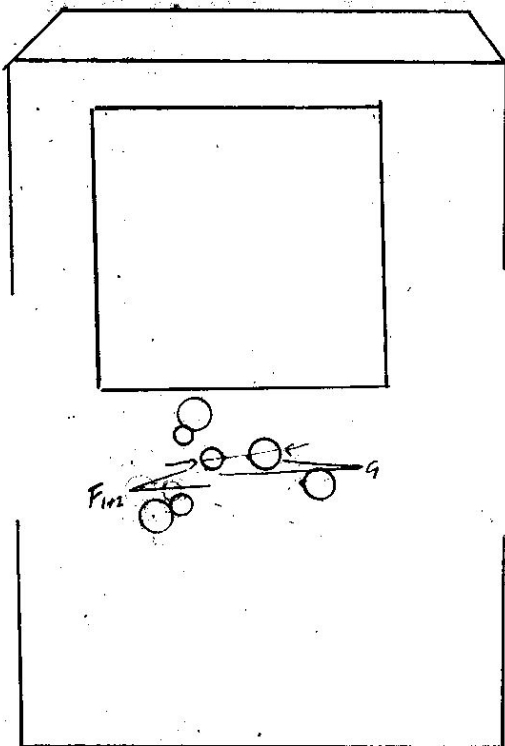


SCHREBER and
SABINE walk through
to join ANNA &
family

'Welcome' Toast is
made

FRIDOLINE is asked
to step forward

Schreber greets her
asks to read



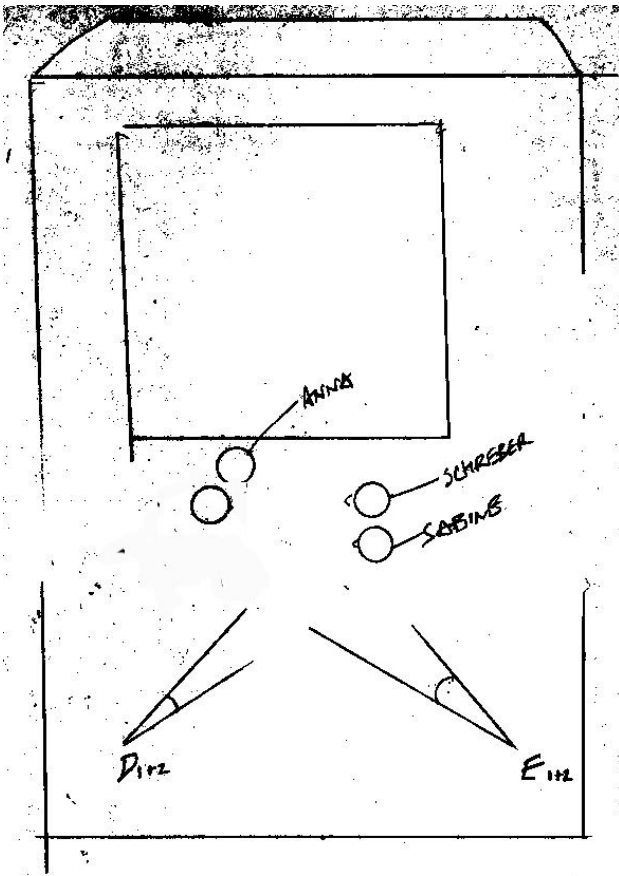
C/Us of

SCHREBER AND
FRIDOLINE

have a conversation
and she reads poem to
him...

They have moment
which is genuine
communication.

One to one...



CHILDREN sent
away to play

the two couples

SCHREBER &
SABINE

ANNA & CARL

face each other.

Anna and Schreber
discuss father